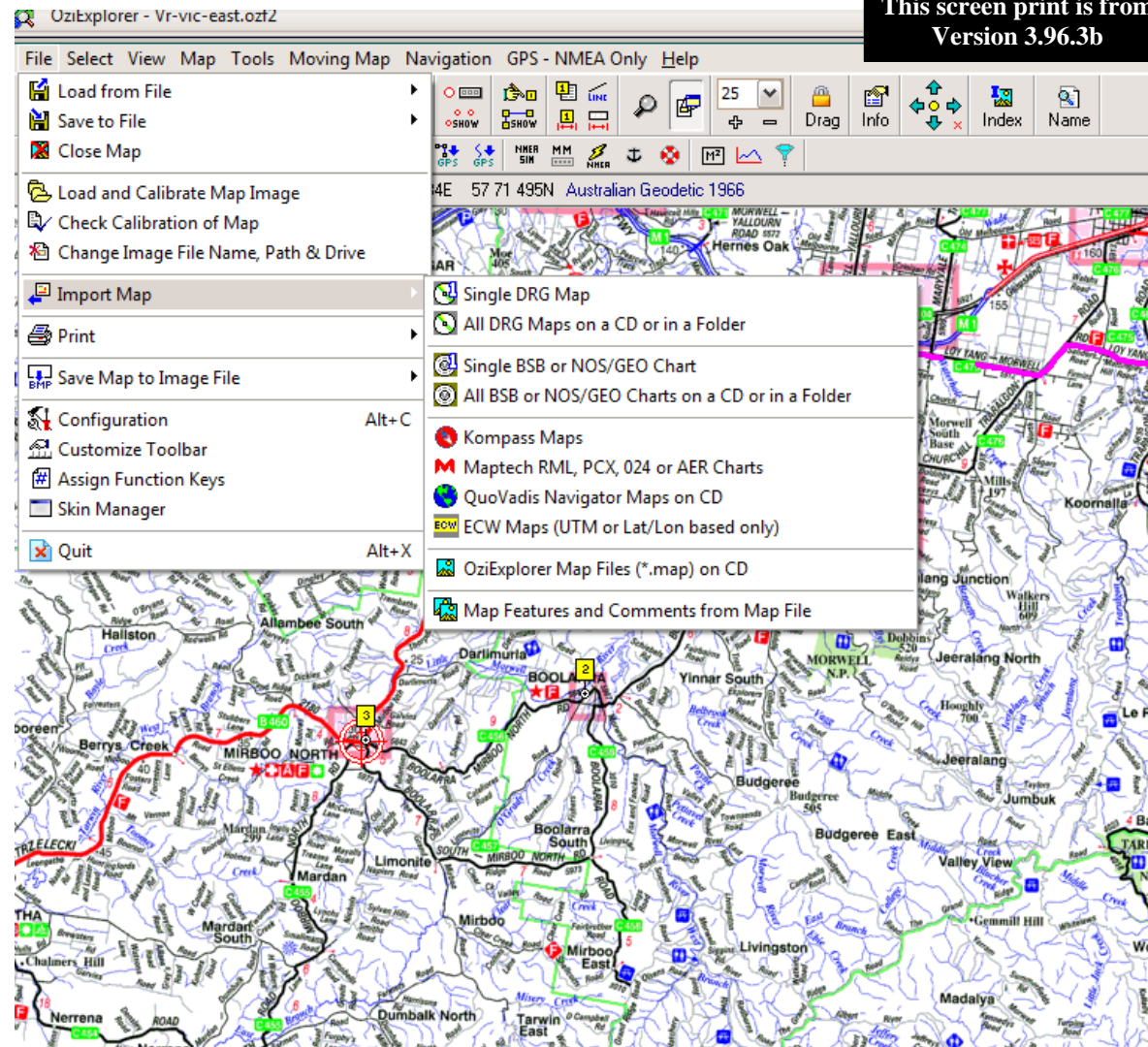


This screen print is from Version 3.96.3b

To create a .map file so that an image file can be loaded by OziExplorer....

➤ (Note: Also read the OziExplorer Tutorial for more information about .map files. The Tutorial option is on the Help Menu)

➤ Use the menu option - File / Import Map / All DRG Maps on a CD or in a Folder option, the .map file will be created by OziExplorer.



This help file comes to you from MADOG - roger@smartersafety.com.au - www.smartersafety.com.au. If it assists your learning please send a .plt (track) file that you made while traveling one of your favourite tracks for inclusion in the National E-Trek library and as a result receive access to make file withdrawals for your own use.

