

To have your "mm" file save in your OziExplorer/Data folder click on "CHANGE TRACK LOG FILE" and then choose your OziExplorer/Data folder.

THE FAMOUS "mm" FILE! - (this is bl**dy brilliant!)

OziExplorer creates a back-up track file whenever you have Moving Map activated. This back-up file can be very useful should you forget to save a file or worse, if you suffer a computer "crash".

The **mmTrack.plt** file is self generating; even when the prior copy has been cut from the folder. We choose to keep it in our OziExplorer/Data folder so it is easily accessible and to ensure we don't forget about it.

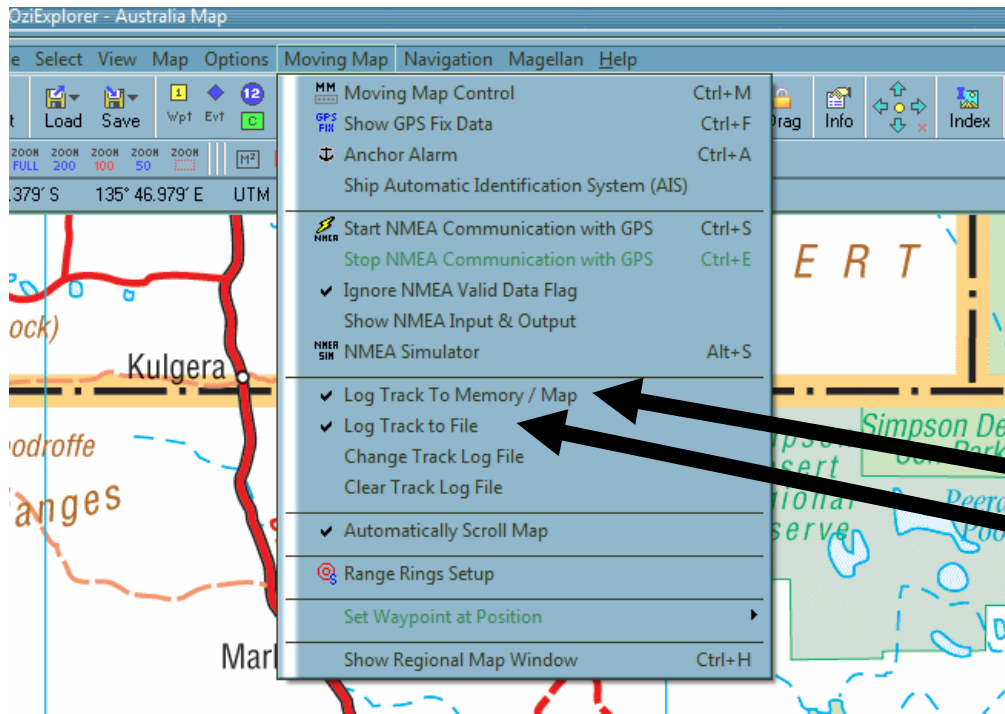
This file builds and builds and builds - every time you switch Moving Map on it adds to it's previous record and this can cause you grief! After a while the file becomes so large it is virtually unmanageable and worthless when you want it.

A good policy is to cut it out 100% at frequent intervals that work for you and file it away in another folder with the date of removal added to it's file name to make it easy for you to go back and find something you are looking for.

As previously mentioned it, the "mm" file regenerates itself next time you activate Moving Map.

In the Moving Map menu ensure these two items are ticked so as your "mm" file will always generate...

- Log Track to Active Track Log File
- Log Track to File



THE FAMOUS MM FILE! - (this is bldy brilliant!)**

Make sure it is in fact working first.

Check these two items in your Moving Map Menu to have it working.