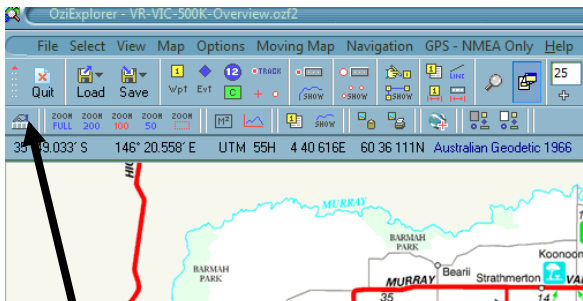


This screen print is from Version 3.96.2a

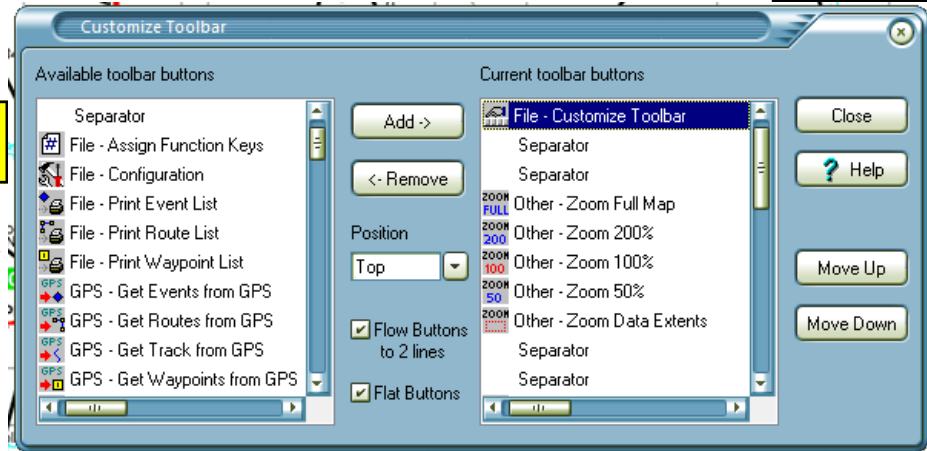


Click here to open up the "Customize Toolbar" box

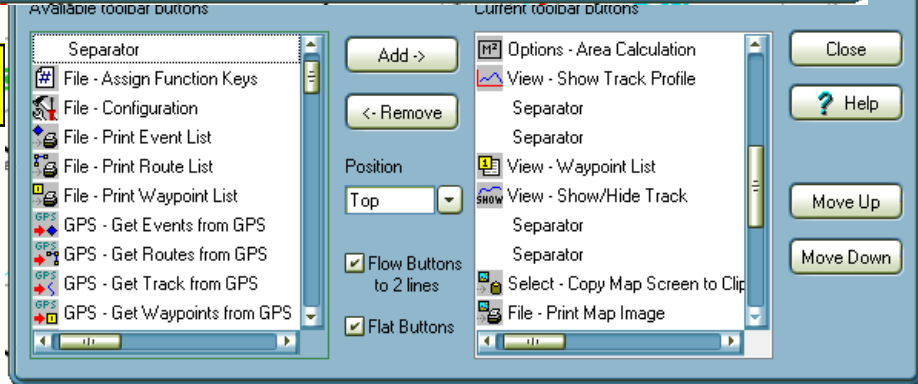
Choose your own buttons from the "Available toolbar button" list or use the buttons that we find most useful. These appear in the "Current toolbar button" list.

Box #1 flows into Box #2 which flows into Box #3, effectively one list that you scroll up and down on..

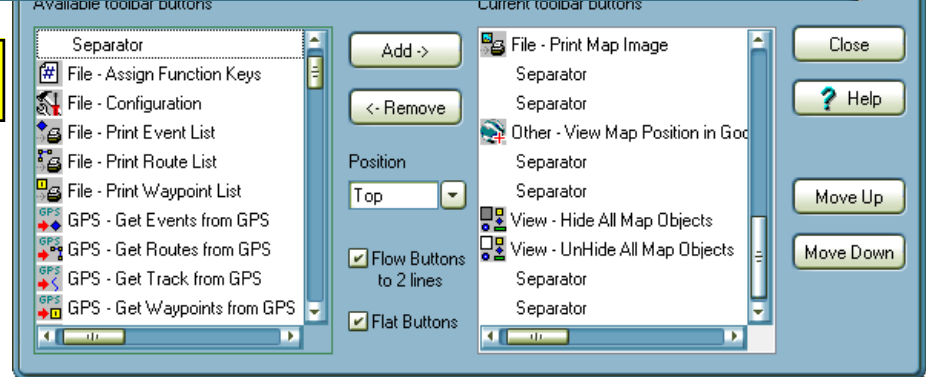
1



2



3



This help file comes to you from MADOG - roger@smartersafety.com.au - www.smartersafety.com.au. If it assists your learning please send a .plt (track) file that you made while traveling one of your favourite tracks for inclusion in the National E-Trek library and as a result receive access to make file withdrawals for your own use.

